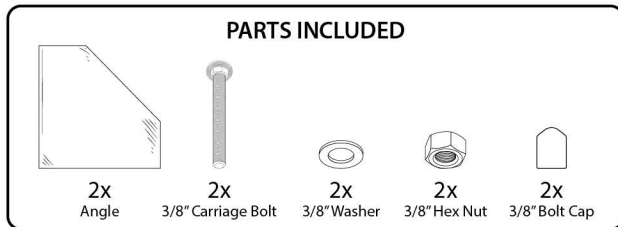
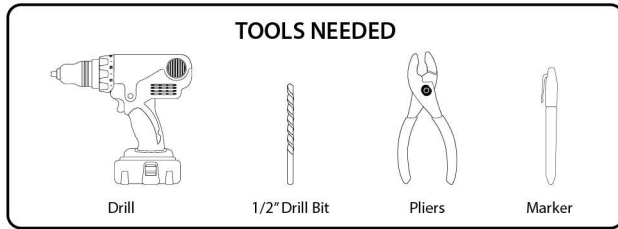


# INVISIBOARD - ANGLE INSTALLATION

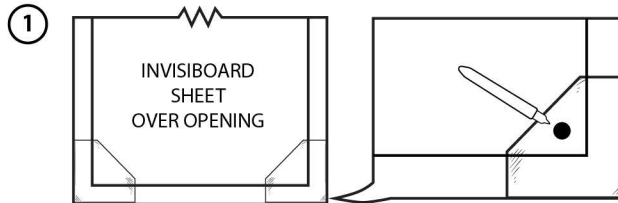


## Angle Installation Requirements by Window Type

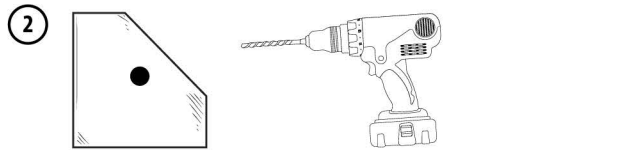
*A single window requires a minimum of 2 installation kits. Use in combinations that best fit the window type and condition of the frame.*

- Angles secure the InvisiBoard Sheets onto the interior of an opening (on flush or inset frames)
- Angles can be installed on all four corners or used in conjunction with Blocks and/or Clips
- Applies to nearly all window types

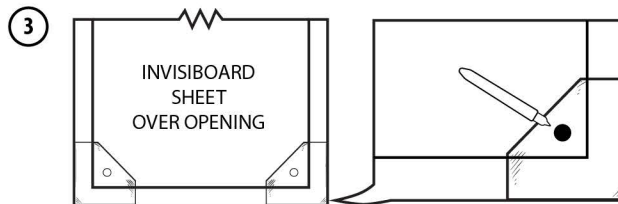
<b>Single-hung, bottom broken</b>	<ul style="list-style-type: none"> <li>• Clear board only the bottom broken pane</li> <li>• Install 2 Angles at top and 2 Angles at the bottom of broken pane</li> </ul>
<b>Single Hung, top broken</b>	<ul style="list-style-type: none"> <li>• Clear board entire opening</li> <li>• Lift bottom sash up enough to provide clearance for bottom Angle Installation</li> <li>• Install 2 Angles at top and 2 Angles at bottom of the opening</li> </ul>
<b>Double-hung</b>	<ul style="list-style-type: none"> <li>• Clear board entire opening on all double hung windows</li> <li>• Adjust top/bottom sashes as needed to provide clearance for Angle Installation</li> <li>• Install 2 Angles at top and 2 Angles at bottom of the opening</li> </ul>
<b>Jalousie</b>	<ul style="list-style-type: none"> <li>• Clear board entire opening by removing top and bottom jalousie (if not already broken)</li> <li>• Install 2 Angles at top and 2 Angles at bottom of the opening</li> </ul>
<b>Crank Window</b>	<ul style="list-style-type: none"> <li>• Clear board individual pane(s)</li> <li>• Grouped panes can be clear boarded together where material can be cut in a square/rectangle</li> </ul>



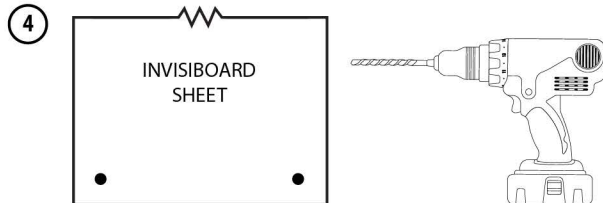
- Remove all broken glass, if present
- Use marker to mark spot on InvisiBoard Angle, as close to the corner of the InvisiBoard as possible, for drilling.



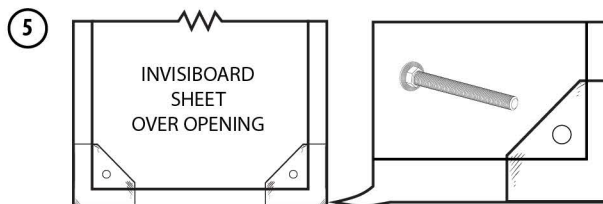
- Use hand drill and 1/2" bit to drill marked holes in InvisiBoard Angles
- Repeat as necessary



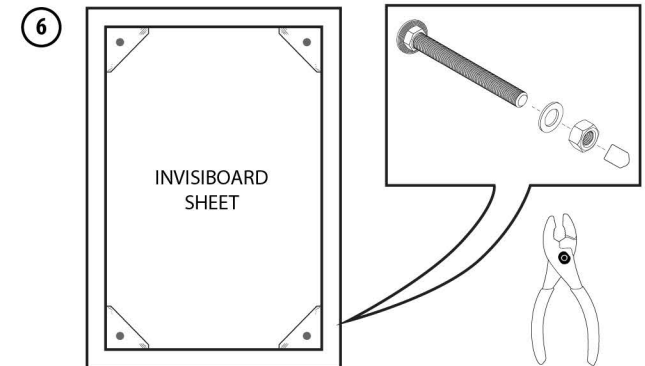
- Use marker to mark spot through Angle hole on InvisiBoard Sheet for drilling



- Use hand drill and 1/2" bit to drill marked holes in InvisiBoard Sheet



- Pass the carriage bolt through the exterior InvisiBoard sheet and then through the InvisiBoard Angle



- Install washer and nut
- Ensure nut is snug; do not overtighten
- Place protective caps over the ends of both carriage bolts on the interior side

For a detailed video demonstrating the InvisiBoard Fastening System, scan the QR code to the right.

YouTube: Install InvisiBoard

